



## 9 Mountview Avenue Gwynneville NSW

3 1 1

Located in a quiet leafy street opposite Robinson Park, this 3 bedroom home exudes charm with its period features.

Boasting ornate ceilings and a sunroom entrance, the adaptable layout offers a spacious living area and sizable dining space. Additional features include ducted air conditioning, a large secluded rear yard, separate laundry and a detached garage with workshop.

This comfortable family home now offers the opportunity to renovate and transform this property into your dream home.

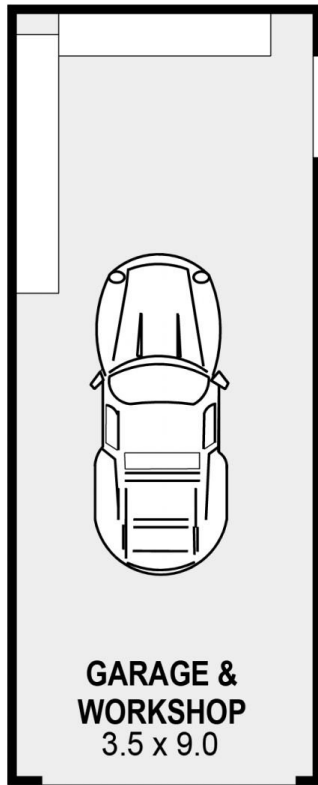
Its prime location is just a 5 minute walk from North Wollongong railway station and is centrally located to the

[For full version visit the website](https://www.jacksonresidential.com.au)

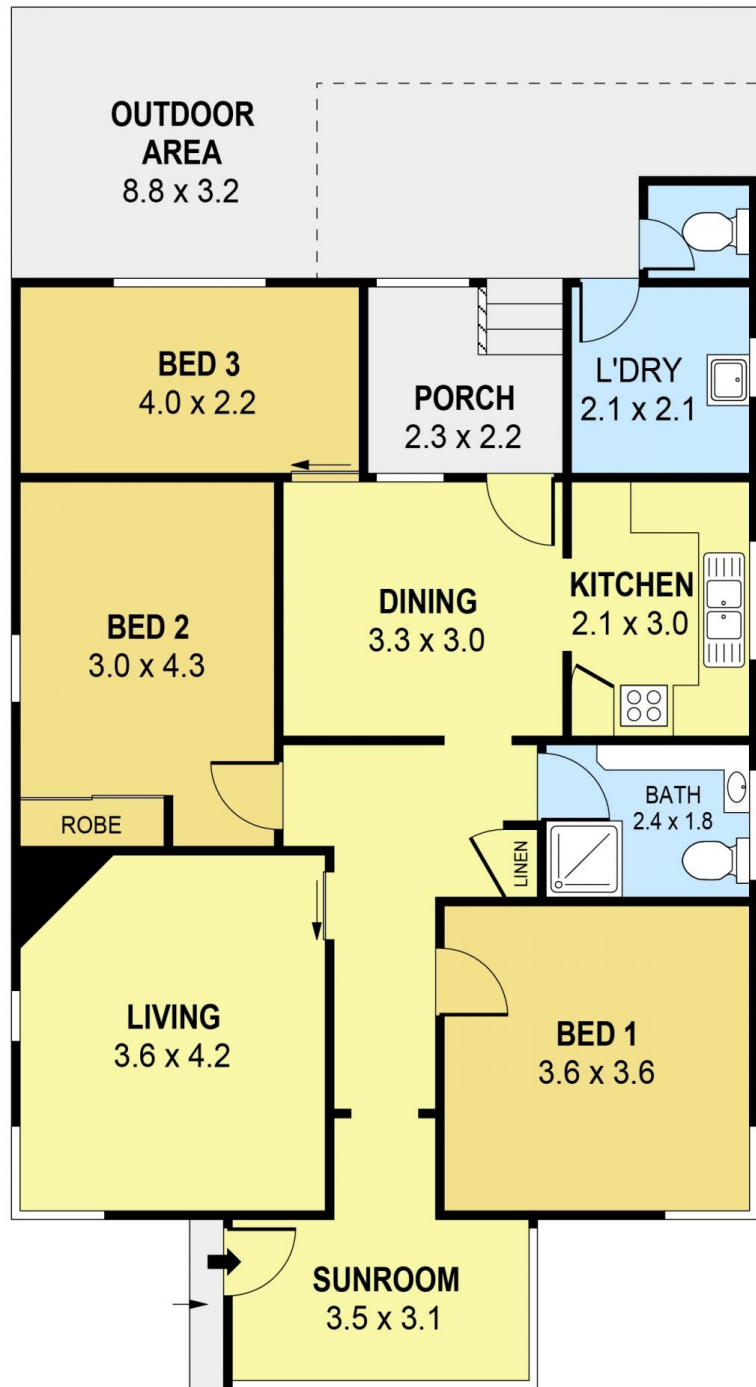
**Type** : House  
**Price** : \$1,050,000 - \$1,150,000  
**Land Size** : 525 sqm  
**View** : <https://www.jacksonresidential.com.au/sale/nsw/wollongong-illawarra/gwynneville/residential/house/8173541>



**Mark Jackson**  
 02 4226 3000



DETACHED



SCALE (METRES)

PLANS SHOWN ONLY INDICATIVE OF LAYOUT. DIMENSIONS ARE APPROXIMATE.  
Ref. No: 02510

INT : 96m<sup>2</sup>  
EXT : 32m<sup>2</sup>  
GARAGE : 32m<sup>2</sup>

9 MOUNTVIEW AVENUE

GWYNNEVILLE